

## EGH-SA / EGH-CA

## Dar/Dar Uzun Bloklar

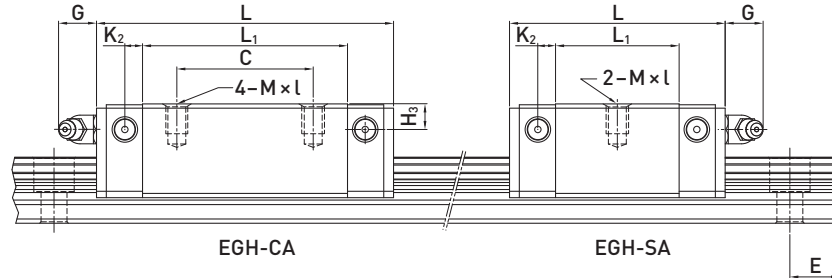
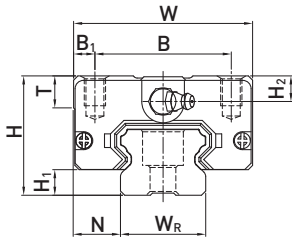
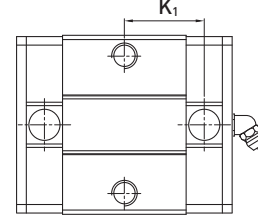
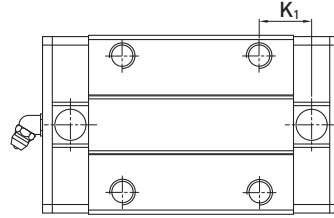
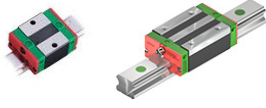


Table 1.35 Dimensions of the block

Series Size	Installation dim. [mm]			Dimensions of the block [mm]													Load Ratings [N]		Mass [kg]
	H	H <sub>1</sub>	N	W	B	B <sub>1</sub>	C	L <sub>1</sub>	L	K <sub>1</sub>	K <sub>2</sub>	G	M × l	T	H <sub>2</sub>	H <sub>3</sub>	C <sub>dyn</sub>	C <sub>0</sub>	
EGH15SA	24	4,5	9,5	34	26,0	4,0	0	23,1	40,1	14,80	3,50	5,7	M4 × 6	6,0	5,50	6,0	5350	9400	0,09
EGH15CA							26	39,8	56,8	10,15							7830	16190	0,15
EGH20SA	28	6,0	11,0	42	32,0	5,0	0	29,0	50,0	18,75	4,15	12,0	M5 × 7	7,5	6,00	6,0	7230	12740	0,15
EGH20CA							32	48,1	69,1	12,30							10310	21130	0,24
EGH25SA	33	7,0	12,5	48	35,0	6,5	0	35,5	59,1	21,90	4,55	12,0	M6 × 9	8,0	8,00	8,0	11400	19500	0,25
EGH25CA							35	59,0	82,6	16,15							16270	32400	0,41
EGH30SA	42	10,0	16,0	60	40,0	10,0	0	41,5	69,5	26,75	6,00	12,0	M8 × 12	9,0	8,00	9,0	16420	28100	0,45
EGH30CA							40	70,1	98,1	21,05							23700	47460	0,76
EGH35SA	48	11,0	18,0	70	50,0	10,0	0	45,0	75,0	28,50	7,00	12,0	M8 × 12	10,0	8,50	8,5	22660	37380	0,74
EGH35CA							50	78,0	108,0	20,00							33350	64840	1,10

## EGW-SC / EGW-CC Geni /Geni Uzun Bloklar

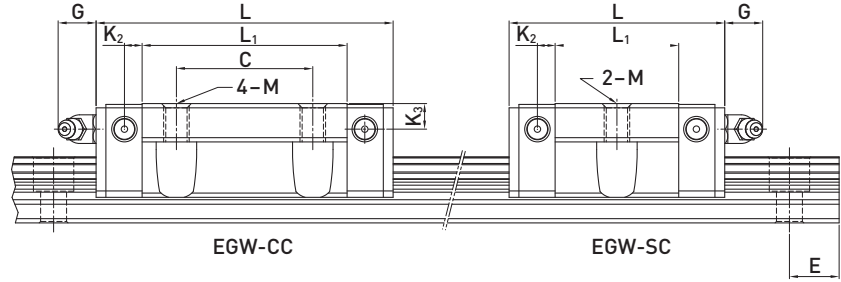
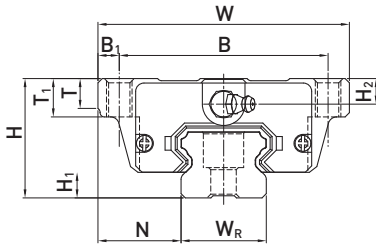
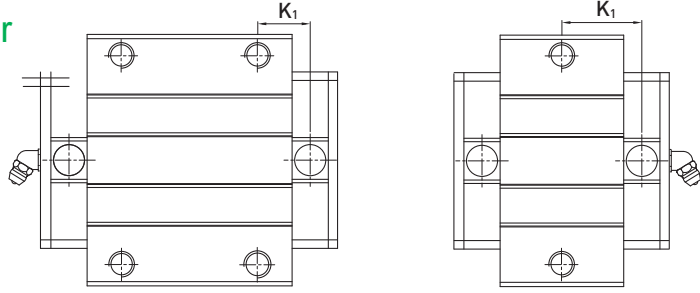
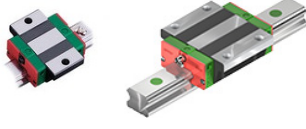


Table 1.36 Dimensions of the block

Series Size	Installation dim. [mm]			Dimensions of the block [mm]															Load Ratings [N]		Mass [kg]
	H	H <sub>1</sub>	N	W	B	B <sub>1</sub>	C	L <sub>1</sub>	L	K <sub>1</sub>	K <sub>2</sub>	G	M	T	T <sub>1</sub>	H <sub>2</sub>	H <sub>3</sub>	C <sub>dyn</sub>	C <sub>0</sub>		
EGW15SC	24	4,5	18,5	52	41,0	5,5	0	23,1	40,1	14,80	3,50	5,7	M5	5,0	7,0	5,50	6,0	5350	9400	0,12	
EGW15CC							26	39,8	56,8	10,15								7830	16190		0,21
EGW20SC	28	6,0	19,5	59	49,0	5,0	0	29,0	50,0	18,75	4,15	12,0	M6	7,0	9,0	6,00	6,0	7230	12740	0,19	
EGW20CC							32	48,1	69,1	12,30								10310	21130		0,32
EGW25SC	33	7,0	25,0	73	60,0	6,5	0	35,5	59,1	21,90	4,55	12,0	M8	7,5	10,0	8,00	8,0	11400	19500	0,35	
EGW25CC							35	59,0	82,6	16,15								16270	32400		0,59
EGW30SC	42	10,0	31,0	90	72,0	9,0	0	41,5	69,5	26,75	6,00	12,0	M10	7,0	10,0	8,00	9,0	16420	28100	0,62	
EGW30CC							40	70,1	98,1	21,05								23700	47460		1,04
EGW35SC	48	11,0	33,0	100	82,0	9,0	0	45,0	75,0	28,50	7,00	12,0	M10	10,0	13,0	8,50	8,5	22660	37380	0,91	
EGW35CC							50	78,0	108,0	20,00								33350	64840		1,40

## EG Linear Yatak Ölçüleri

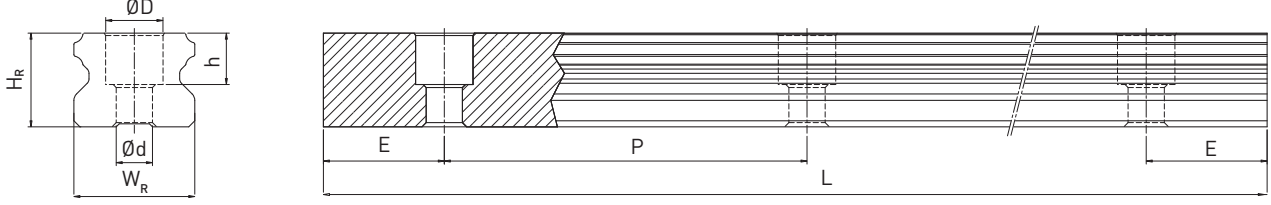


Table 1.37 Dimensions of the rail EGR\_R

Series Size	Screws for rail [mm]	Dimensions of the rail [mm] <sup>4</sup>						Max. length [mm]	Max. length E <sub>1</sub> = E <sub>2</sub>	E <sub>1/2</sub> min [mm]	E <sub>1/2</sub> max [mm]	Mass [kg/m]
		W <sub>R</sub>	H <sub>R</sub>	D	h	d	P					
EGR15R	M3 × 16	15	12,5	6,0	4,5	3,5	60,0	4000	3900	6	54	1,25
EGR20R	M5 × 16	20	15,5	9,5	8,5	6,0	60,0	4000	3900	7	53	2,08
EGR25R	M6 × 20	23	18,0	11,0	9,0	7,0	60,0	4000	3900	8	52	2,67
EGR30R	M6 × 25	28	23,0	11,0	9,0	7,0	80,0	4000	3920	9	71	3,35
EGR35R	M8 × 25	34	27,5	14,0	12,0	9,0	80,0	4000	3920	9	71	6,14